

LIS: Cross-National Data Center in Luxembourg is seeking applications for an Executive Director

Further Particulars

LIS Overview

LIS — formerly known as the Luxembourg Income Study — is a cross-national data archive and research center, based in Luxembourg. Since its founding in 1983, LIS' core work has been to acquire, harmonize, and otherwise add value to household survey data and to make these high-quality resources available to researchers around the world.

Over the last three decades, LIS and its data holdings have grown enormously. The data are currently organized into two databases. The longstanding *Luxembourg Income Study (LIS) Database*, which is focused on unit-record data about income and related variables, will soon include over 300 datasets from more than 50 high- and middle-income countries spanning over 30 years. The smaller and newer *Luxembourg Wealth Study (LWS) Database* contains unit-record data on households' financial assets and debt. It currently includes 20 datasets from 12 countries, spanning 13 years. A major expansion of *LWS* is planned for 2015.

To protect the confidentiality of the microdata, the *LIS* and *LWS* data can be accessed only by registered users and via a remote-execution system known as *LISY*. In addition to data production and provision, LIS offers a wide range of services and products, including user support, teaching packages, training workshops, a Working Papers series, visiting scholar programs, and a pre- and post-doctoral scholars program. LIS also provides research resources such as its well-known *Key Figures* (harmonized summary indicators for multiple countries and years) and an online table-maker. These resources are available to all visitors to the LIS [website](#).

LIS Leadership History

LIS was founded by two US academics, economist Timothy Smeeding and sociologist Lee Rainwater, and a Luxembourgish psychologist, Gaston Schaber. LIS was originally established as a division of CEPS/INSTEAD, a research institute located in Luxembourg. In 2002, LIS separated from CEPS and became an independent non-profit institution, incorporated in Luxembourg, with Smeeding serving as Director and Rainwater as Research Director.

In 2005, Rainwater retired as LIS Research Director, and was succeeded by Markus Jäntti, an economist based in Sweden.

In 2006, Smeeding retired as LIS Director and was succeeded by Janet Gornick (Director), a political economist and sociologist based in the United States. When Gornick became overall LIS Director, she also established a satellite office based at the Graduate Center (GC) of the City University of New York (CUNY). The satellite office, officially "the LIS Center", is also known as the "United States LIS Office." LIS' core work remains based in Luxembourg; the US Office is a venue for teaching, research, public event programming, and fundraising.

During the last five years, LIS has added a number of affiliated scholars to its senior ranks:

- Professor Louis Chauvel (*LIS Senior Scholar*), University of Luxembourg
- Professor Conchita D'Ambrosio (*LIS Senior Scholar*) University of Luxembourg
- Professor Branko Milanovic (*LIS Center Senior Scholar*), City University of New York
- Professor Paul Krugman (*LIS Center Distinguished Scholar*), City University of New York
- Professor Frank Cowell (*LIS Senior Advisor*), London School of Economics

These scholars, appointed by LIS' Executive Committee, present LIS-related scholarship at national and international meetings, and assist in raising LIS' visibility and attracting financial sponsors. Janet Gornick and Markus Jäntti have also been named "Senior Scholars" and it is anticipated that the new Executive Director will be added to the Senior Scholar masthead as well.

In December 2014, after 10 years of service, Markus Jääntti stepped down as LIS Research Director. Janet Gornick continues to serve as Director of LIS, overall, and also as Director of the United States LIS Office.

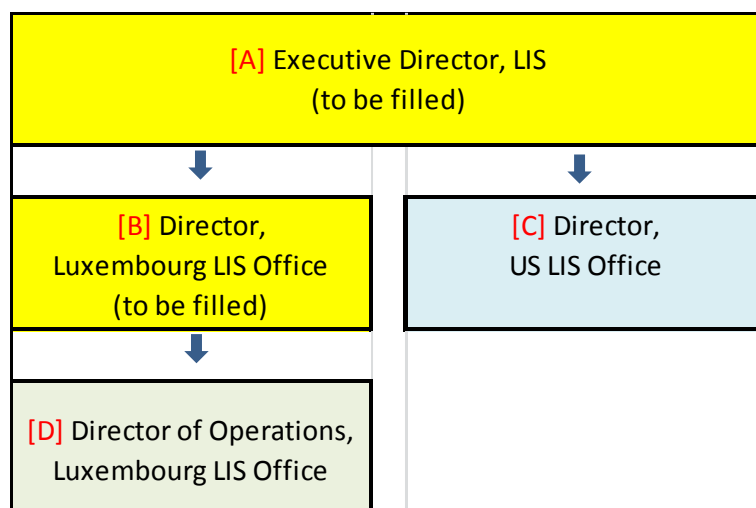
Planned LIS Leadership Expansion

In 2014, the LIS Director and its governing bodies – recognizing the rapid and marked growth of both offices – decided to reorganize and expand LIS’ leadership structure. A new structure will be implemented in 2015–2016.

Under this new structure, the Research Director position has been eliminated. LIS will instead create and fill a new position, that of LIS Executive Director (ED). **The ED will be responsible for directing LIS, overall, and for directing the Luxembourg LIS Office. In other words, this search is for a senior person who will take both positions A and B, in the diagram below:**

The ED will work closely with the Director of the US LIS Office, and with the Director of Operations of the Luxembourg office, an existing position that will be expanded.

This new leadership structure, organized around a senior management team, is shown as follows:



The LIS Executive Committee has received commitments from Janet Gornick who has agreed to retain her position as Director of the US LIS Office, and from Thierry Kruten who has agreed to stay as Director of Operations of the Luxembourg LIS Office with expanded responsibilities.

A detailed Memorandum of Understanding (MOU) will be drawn up between the two offices, with input from the new ED, and subject to approval of the LIS Executive Committee. This MOU will specify relations between the two offices with respect to: autonomy, decision-making authority, and divisions of labor (including among the three members of the senior management team), as well as participation on LIS governing bodies, and flow of funds.

The New LIS ED

The LIS ED position will offer a mid-career scholar an extraordinary opportunity — that is, to lead a dynamic, high-visibility, widely-respected and ever-evolving institution. The new LIS ED – like LIS’ past overall Directors, Smeeding and Gornick – will have the chance to guide and shape LIS, ideally, over a period of several years.

A key component of the position is maintaining and enlarging LIS’ funding. Currently LIS’ core support comes from [contributions](#) from several countries and supranational institutions; the ED will be responsible for continuing and strengthening that funding base. The ED will work in close collaboration with the Director of the US LIS Office, who will continue to raise funds from US-based funders, both private and public. Both the ED and the US Office Director will draw on LIS’ [governing bodies](#) as they carry out the crucial work of financing LIS.

The LIS ED position will require a substantial time commitment but it is not intended to be a full-time job. While the ED will receive an annual stipend from LIS (€25,000 annually) and LIS-related travel and lodging costs will be covered in full, the LIS ED Search Committee expects that a candidate who wishes to have full-time employment will hold a primary position in – and receive the majority of her/his salary from – another institution.

The LIS ED will be expected to spend substantial amounts of time in the Luxembourg LIS Office, ideally a minimum of 30–40 days per year. The organization of the ED’s time spent in Luxembourg will depend, of course, on the location of the ED’s primary institution and be planned in collaboration with the senior management team.

Timetable

The 10-person Search Committee expects to follow the following timetable:

February 5, 2015	Launch of job advertisement
March 15, 2015	Deadline for submission of applications
June or July 2015	Interviews of short-listed candidates, with members of Search Committee, held in Luxembourg (interviews may be scheduled to coincide with the annual meeting of the Society for the Study of Economic Inequality, ECINEQ, to be held in Luxembourg in July)
July or August 2015	Announcement of appointment decision
September 2015	Successful candidate becomes “ED-elect”
September 2016	ED in post